

Description of components

- (Figure 1)
 A – Handles
 B – Bases for screen tracks
 C – Roller cartridge left end cap
 D – Roller cartridge right end cap
 E – Screws and anchors kit
 F – Brake mechanism
 G – Pull bar end caps
 H – Screen stops
 I – Cone spring
 L – Screws for left end cap
 M – Pull cord
 N – Supports for screen tracks (frontal fixing)
 O – Supports for roller cartridge and pull bar (frontal fixing)
 P – Plugs (frontal fixing)
 Q – Screws for roller cartridge and pull bar (frontal fixing).
- (Figure 2)
 R – Roller cartridge and pull bar
 S – Side screen tracks
 T – Brush weatherstrip

STEP 1

Measure the width "W" of the window opening, in millimetres.

(Figure 3)

STEP 2

Check that the profiles are aligned at the end where the cut is to be made (figure 4). Calculate the exact measurement at which the cartridge (R) is to be cut:

CUT LENGTH OF CARTRIDGE (R) = L + 80 mm.

Identify the line of the cut (L+80 mm) on the printed ruler, according to the width measurement taken previously, and proceed to cut through the cartridge, bar and screen

together, exactly on the line.

(Figure 5)

Remove any burrs and waste left by the cut.

(Figure 6)

STEP 3

Locate the left end cap (C), the brake (F) and the screw (L) in the box of accessories (figure 7);

proceed to assemble the end cap (C) and the brake (F) (figure 8).

Insert the assembled part into the tube and secure in place with the screws provided (L) (figures 9-10).



STEP 4

Locate the frontal fixing supports (O) and the screws (Q) in the box of accessories (figure 11).

Fix the support (O) to the end cap (C) fitted during the previous step (figure 12).

Locate the right end cap (D), the frontal fixing supports (O) and the screws (Q) in the box of accessories (figure 13).

Fix the right end cap (D) and the frontal support (O) to the preassembled spring mechanism (figure 14).

STEP 5

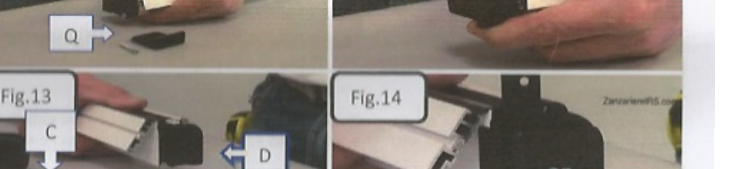
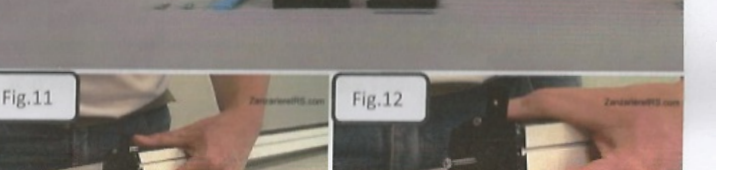
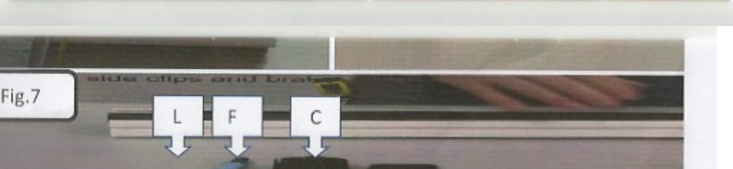
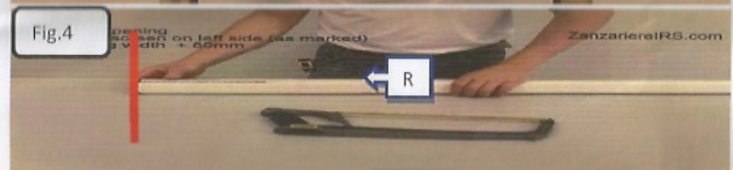
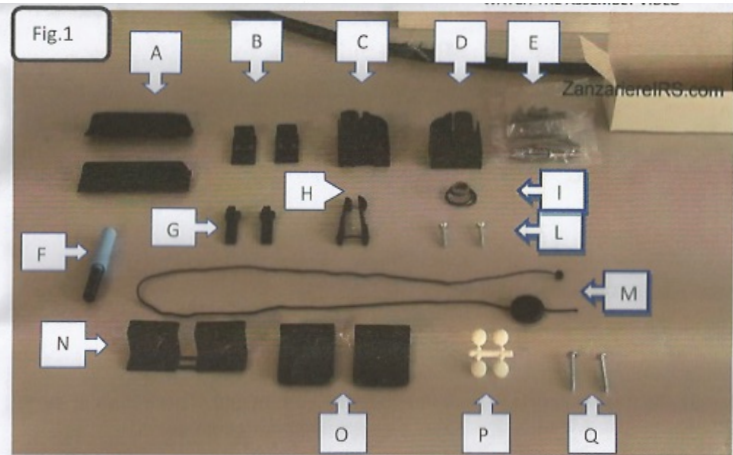
Locate the brush weatherstrip (T), the two handles (A), the pull cord (M) and the two pull bar end caps (G) in the box of accessories (figure 15).

Fit one handle (A) to the groove in the pull bar, then the pull cord (M), then the other handle (A). (Figures 16-17)

STEP 6

Fit the brush weatherstrip (T) to the back of the pull bar, i.e. the side opposite from the handles. (Figures 18)

Fit the two end caps (G) to the pull bar (figures 19-20).



STEP 7

Measure the height "H" of the window opening, in millimetres. (Figure 21)

STEP 8

Lay out the two tracks (S), align the brush weatherstrips with the ends and proceed to make the cut at this same end. (Figure 22)

CUT HEIGHT OF TRACK = H + 10 mm.

STEP 9

Pinch the end of the profile slightly, where the weatherstrip is seated, (the strip must be held firmly in position, so that it cannot slide when the screen is in motion) (figure 24)

STEP 10

Locate the two stops (H) and slide them into the groove of each track profile. (Figures 25-26)

Locate the track supports (N) and fit one to the bottom end of each track. (Figures 27-28)

STEP 11

Position the tracks (S) ready for drilling, with the 36 mm face that will be exposed to view uppermost.

Mark 3 equidistant centres along the length of the tracks (S) (figures 29-30).

Using a 4 mm bit, drill holes at the three centres, passing through both sides of the track (figure 31).

Now enlarge each of the 4 mm holes with a 8 mm bit, but only on the side that will be exposed to view (figure 32), so that each track has three 8 mm holes on one side and three 4 mm holes on the other side (figure 33).

STEP 12

Position the assembled roller cartridge (R) directly over the window opening (figure 34).

The ends of the roller cartridge should project 40 mm to the left and to the right of the window opening, and the underside of the cartridge must be perfectly square with the opening (figures 35-36).

Check that the cartridge is positioned correctly in relation to the opening.

Proceed to fix the cartridge in place with the screws provided. When fixing to the wall, first mark the position of each screw hole, then proceed to drill the masonry with a 6 mm bit, insert anchor plugs, and secure with the fixing screws (E). (Figures 37-38)

STEP 13

Fit the two tracks (S), coupling the top end to the relative appendage on the roller cartridge (figure 39-40), and positioning the profile so that the stop (H) inserted previously is directed toward the interior of the room (figure 46).

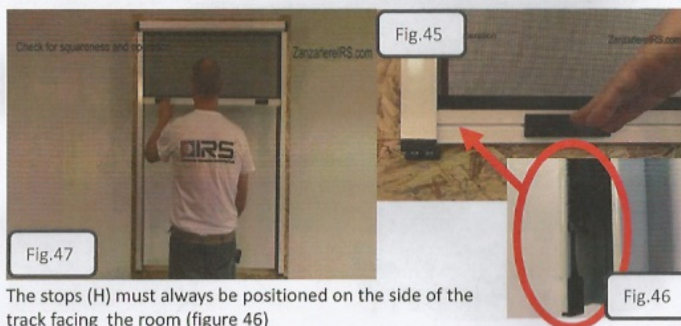
Align the track vertically, flush with the wall, and secure with the fixing screws (E) (figures 41-42-43).

Conceal the fixing holes in the tracks with the plugs (P) (figure 44).

STEP 14

To close - pull the bar down a certain distance with the cord, then take hold of the handles and lock the screen against the relative stops by tilting the bar slightly away from the window opening.

To open - grip the handles, apply gentle downward pressure and tilt the bar forward to release. (figures 45-47)



The stops (H) must always be positioned on the side of the track facing the room (figure 46)

